

GEOTECHNICAL INVESTIGATION AND ACID SULFATE SOIL ASSESSMENT

FOR

NSW LAND & HOUSING CORPORATION

2-4 Hamel Road & 15-17 Combles Parade, Matraville, New South Wales (BGXPR)

Report No: 21/1721

Project No: 31204/5140D-G

June 2021

Table of Contents

1. INTRODUCTION	2
2. NATURE OF THE INVESTIGATION	2
2.1. Fieldwork	2
2.2. Laboratory Testing	3
3. GEOLOGY AND SITE CONDITIONS	3
4. SUBSURFACE CONDITIONS	3
5. GEOTECHNICAL DISCUSSION	4
5.1. Site Classification to AS2870	4
5.2. Foundation Design	4
5.3. Soil Aggressiveness	5
6. FINAL COMMENTS	6

DRAWING NO. 21/1721 – BOREHOLE AND PENETROMETER LOCATIONS

NOTES RELATING TO GEOTECHNICAL REPORTS

APPENDIX A – BOREHOLE LOGS AND EXPLANATION SHEETS

APPENDIX B – LABORATORY TEST RESULTS

1. INTRODUCTION

This report presents the results of a combined Geotechnical Investigation and Acid Sulfate Soil (ASS) assessment carried out by STS Geotechnics Pty Limited (STS) for a proposed new residential development to be constructed at 2-4 Hamel Road & 15-17 Combles Parade, Matraville, New South Wales. At the time of writing this report STS were not provided with architectural drawings for the project, however we understand the development will typically comprise the construction of single and/or double storey residential buildings with no basement levels. Reference to the Randwick Local Environmental Plan (LEP) indicates that the site is not located within an Acid Sulfate Soils (ASS) area, as such an ASS assessment will not be required.

The purpose of the investigation was to:

- assess the subsurface conditions over the site,
- provide a Site Classification to AS2870,
- provide recommendations regarding the appropriate foundation system for the site including design parameters,
- comment on soil aggressiveness to buried steel and concrete,

The investigation was undertaken at the request of Nikola Ristevski of NSW Land & Housing Corporation.

Our scope of work did not include a contamination assessment.

2. NATURE OF THE INVESTIGATION

2.1. Fieldwork

The fieldwork consisted of drilling six (6) boreholes numbered BH1 to BH6, inclusive, at the locations shown on Drawing No. 21/1721. Because there was no access for the drilling rig, borehole BH3 and BH5 were drilled using hand auger equipment. The remainder of the boreholes were drilled using a utility mounted drilling rig, owned and operated by STS. Soils were drilled using rotary solid flight augers. Soil strengths were determined by undertaking Perth Sand Penetrometer (PSP) tests at each borehole location.

Drilling operations were undertaken by one of STS's geo-technicians who also logged the subsurface conditions encountered.

The subsurface conditions observed are recorded on the borehole logs given in Appendix A. An explanation of the terms used on the logs is also given in Appendix A. Notes relating to geotechnical reports are also attached.

2.2. Laboratory Testing

To assess the soils for their aggressiveness, a selected representative soil sample was tested to determine the following:

- pH,
- Sulphate content (SO_4),
- Chloride content (CL), and
- Electrical Conductivity (EC)

Detailed test reports are given in Appendix B.

3. GEOLOGY AND SITE CONDITIONS

The Sydney geological series sheet at a scale of 1:100,000 shows that the site is underlain by quaternary age soils. Materials within this formation generally comprise medium to fine grained “marine” sand with podsols.

The site is irregular in shape with an approximate area of 1200 metres². At the time of the fieldwork, the site was occupied by residential dwellings with surrounding pavements, grass and trees. The ground surface falls approximately 2.0 metres to the south.

The site is bound Combles Parade to the north, Hamel Road to the south, and residential dwellings to the west and east.

4. SUBSURFACE CONDITIONS

When assessing the subsurface conditions across a site from a limited number of boreholes, there is the possibility that variations may occur between test locations. The data derived from the site investigation programme are extrapolated across the site to form a geological model and an engineering opinion is rendered about overall subsurface conditions and their likely behaviour regarding the proposed development. The actual condition at the site may differ from those inferred, since no subsurface exploration programme, no matter how comprehensive, can reveal all subsurface details and anomalies.

The subsurface conditions generally consist of topsoil overlying silty sands. Topsoil was encountered to approximate depths of 0.3 and 0.4 metres. Loose, becoming medium dense with depth, silty sands underlie the topsoil to the depth of drilling, 3.0 metres, in BH1, BH2, BH4,

and BH6. The medium dense sands could not be penetrated beyond a depth of 1.4 and 0.9 metres in BH3 and BH5, respectively, using hand auger equipment.

Groundwater was not observed during drilling of the boreholes.

5. GEOTECHNICAL DISCUSSION

5.1. Site Classification to AS2870

The classification has been prepared in accordance with the guidelines set out in the “Residential Slabs and Footings” Code, AS2870 - 2011.

Due to the presence of loose sands beyond a depth of 400 mm, the site is classified as a *Problem Site (P)*. It is not considered suitable to reclassify the site.

Foundation design and construction consistent with this classification shall be adopted as specified in the above referenced standard and in accordance with the following design details.

5.2. Foundation Design

Due to the potential for differential settlements, we do not recommend founding any structural loads in the topsoils or loose sand materials.

Pad and/or strip footings founded in the medium dense sands may be proportioned using an allowable bearing pressure of 100 kPa. The minimum depth of founding must comply with the requirements of AS2870.

If a higher load carrying capacity is required, piers may be used for support. The capacity of the pier will depend on the depth of founding. We will be happy to determine the required founding depth once the pile loads have been provided to us. Because of the sandy nature of the onsite soils conventional augered cast in place piers are not considered suitable. Steel screw piers are considered best suited to the site conditions.

To ensure the bearing values given can be achieved, care should be taken to ensure the base of the excavations is free of all loose material prior to concreting. To this end, it is recommended that all excavations be concreted as soon as possible, preferably immediately after excavating, cleaning, inspecting and approval.

The site is considered suitable for slab on ground construction provided due regard is given to the ground surface slope. If slab on ground is required, we recommend that the topsoils are stripped away, and the underlying loose sands are densified by a minimum of 6 passes of a vibrating roller. The slab may then be designed for an allowable bearing pressure of 50 kPa and should be designed for a *Moderately Reactive (M)* classification. Alternatively, piles are to be

used to suspend the slab and the slab should be designed for movements consistent with a *Slightly Reactive (S)* classification.

During foundation construction, should the subsurface conditions vary to those inferred in this report, a suitably experienced geotechnical engineer should review the design and recommendations given above to determine if any alterations are required.

5.3. Soil Aggressiveness

The aggressiveness or erosion potential of an environment in building materials, particularly concrete and steel is dependent on the levels of soil pH and the types of salts present, generally sulphates and chlorides. In order to determine the degree of aggressiveness, the test values obtained are compared to Tables 6.4.2 (C) and 6.5.2 (C) in AS2159 – 2009 Piling – Design and Installation. The test results are summarised in Table 5.1.

The soils on the site are cohesive in nature. Therefore, the soil conditions B are considered appropriate.

Table 5.1 – Soil Aggressiveness Summary Table

Sample No.	Location	Depth (m)	pH	Sulfate (mg/kg)	Chloride (mg/kg)	Electrical Conductivity (dS/m)	
						EC _{1:5}	EC _e
S1	BH1	0.4	6.0	20	<10	0.013	0.2
S2	BH2	0.4	6.1	20	<10	0.016	0.3
S3	BH4	0.4	6.2	20	<10	0.018	0.3
S4	BH6	0.4	6.3	<10	<10	0.007	0.1

A review of the durability aspects indicates that:

- pH : minimum value of 6.0
- SO₄ : maximum value of 20 mg/kg (ppm) < 5000 ppm
- Cl : maximum value of <10 mg/kg (ppm) < 5000 ppm
- EC_e : maximum value of 0.3 dS/m

In accordance with AS2159-2009, the exposure classification for the onsite soils is non-aggressive to steel and mildly aggressive to concrete. In accordance with AS2870-2011 the soils are classified as A1.

Reference to DLWC (2002) “Site Investigations for Urban Salinity” indicates that EC_e values of 0.1 and 0.3 dS/m are consistent with the presence of non-saline soils.

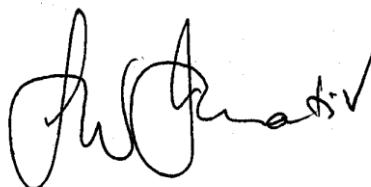
6. FINAL COMMENTS

During construction, should the subsurface conditions vary from those inferred above, we would be contacted to determine if any changes should be made to our recommendations.

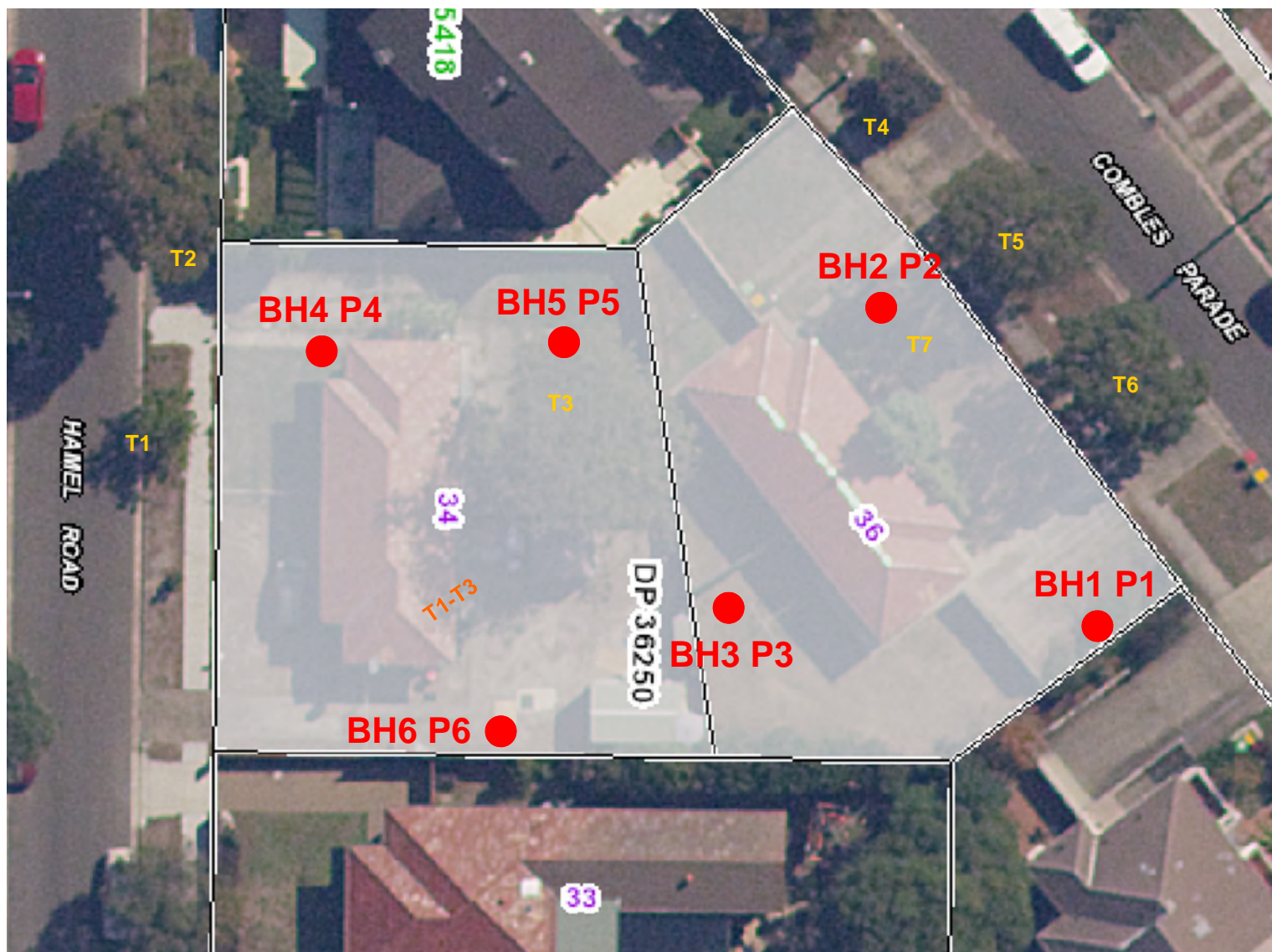
The exposed bearing surfaces for footings should be inspected by a geotechnical engineer to ensure the allowable pressure given has been achieved.



Slaiman Shirzai
Geotechnical Engineer
STS Geotechnics Pty Limited



Laurie Ihnativ
Senior Geotechnical Engineer
STS Geotechnics Pty Limited



STS Geotechnics Pty. Ltd.

Scale: Unknown

Date: June 2021

Client: NSW LAND & HOUSING CORPORATION

**GEOTECHNICAL INVESTIGATION
2-4 HAMEL ROAD & 15-17 COMBLES PARADE, MATRAVILLE
BOREHOLE AND PENETROMETER LOCATIONS**

Project No.
31204/5140D-G

Drawing No: 21/1721

NOTES RELATING TO GEOTECHNICAL REPORTS

Introduction

These notes have been provided to outline the methodology and limitations inherent in geotechnical reporting. The issues discussed are not relevant to all reports and further advice should be sought if there are any queries regarding any advice or report.

When copies of reports are made, they should be reproduced in full.

Geotechnical Reports

Geotechnical reports are prepared by qualified personnel on the information supplied or obtained and are based on current engineering standards of interpretation and analysis.

Information may be gained from limited subsurface testing, surface observations, previous work and is supplemented by knowledge of the local geology and experience of the range of properties that may be exhibited by the materials present. For this reason, geotechnical reports should be regarded as interpretative rather than factual documents, limited to some extent by the scope of information on which they rely.

Where the report has been prepared for a specific purpose (eg. design of a three-storey building), the information and interpretation may not be appropriate if the design is changed (eg. a twenty storey building). In such cases, the report and the sufficiency of the existing work should be reviewed by STS Geotechnics Pty Limited in the light of the new proposal.

Every care is taken with the report content, however, it is not always possible to anticipate or assume responsibility for the following conditions:

- Unexpected variations in ground conditions. The potential for this depends on the amount of investigative work undertaken.
- Changes in policy or interpretation by statutory authorities.
- The actions of contractors responding to commercial pressures.

If these occur, STS Geotechnics Pty Limited would be pleased to resolve the matter through further investigation, analysis or advice.

Unforeseen Conditions

Should conditions encountered on site differ markedly from those anticipated from the information contained in the report, STS

Geotechnics Pty Limited should be notified immediately. Early identification of site anomalies generally results in any problems being more readily resolved and allows re-interpretation and assessment of the implications for future work.

Subsurface Information

Logs of a borehole, recovered core, test pit, excavated face or cone penetration test are an engineering and/or geological interpretation of the subsurface conditions. The reliability of the logged information depends on the drilling/testing method, sampling and/or observation spacings and the ground conditions. It is not always possible or economic to obtain continuous high quality data. It should also be recognised that the volume or material observed or tested is only a fraction of the total subsurface profile.

Interpretation of subsurface information and application to design and construction must take into consideration the spacing of the test locations, the frequency of observations and testing, and the possibility that geological boundaries may vary between observation points.

Groundwater observations and measurements outside of specially designed and constructed piezometers should be treated with care for the following reasons:

- In low permeability soils groundwater may not seep into an excavation or bore in the short time it is left open.
- A localised perched water table may not represent the true water table.
- Groundwater levels vary according to rainfall events or season.
- Some drilling and testing procedures mask or prevent groundwater inflow.

The installation of piezometers and long term monitoring of groundwater levels may be required to adequately identify groundwater conditions.

Supply of Geotechnical Information or Tendering Purposes

It is recommended tenderers are provided with as much geological and geotechnical information that is available and that where there are uncertainties regarding the ground conditions, prospective tenders should be provided with comments discussing the range of likely conditions in addition to the investigation data.

APPENDIX A – BOREHOLE LOGS AND EXPLANATION SHEETS

Client: NSW Land & Housing Corporation		Project / STS No. 31204/5140D-R		BOREHOLE NO.: BH 1		
Project: 2-4 Hamel Road & 15-17 Combles Parade, Matraville		Date: May 31, 2021				
Location: Refer to Drawing No. 21/1721		Logged: TS Checked By: SS		Sheet 1 of 1		
W A T E R L E V E	S A M P L E S	DEPTH (m)	DESCRIPTION OF DRILLED PRODUCT (Soil type, colour, grain size, plasticity, minor components, observations)	S Y M B O L	CONSISTENCY (cohesive soils) or RELATIVE DENSITY (sands and gravels)	M O I S T U R E
	S1 @ 0.4 m		TOPSOIL: SILTY SAND: brown, fine to medium grained, trace of gravel	SM	-	D-M
		0.5	SILTY SAND: pale grey, fine to medium grained	SM	LOOSE	D-M
		1.0				
		1.5				
		2.0	SILTY SAND: dark grey, fine to medium grained	SM	MEDIUM DENSE	M
		2.5	SILTY SAND: pale grey, fine to medium grained	SM	MEDIUM DENSE	M
			BOREHOLE DISCONTINUED AT 3.0 M			
D - disturbed sample U - undisturbed tube sample B - bulk sample WT - level of water table or free water N - Standard Penetration Test (SPT) S - jar sample				Contractor: STS Equipment: Edson RP70 Hole Diameter (mm): 100 Angle from Vertical (°): 0 Drill Bit: Spiral		
NOTES: See explanation sheets for meaning of all descriptive terms and symbols						

Client: NSW Land & Housing Corporation		Project / STS No. 31204/5140D-R		BOREHOLE NO.: BH 2		
Project: 2-4 Hamel Road & 15-17 Combles Parade, Matraville		Date: May 31, 2021				
Location: Refer to Drawing No. 21/1721		Logged: TS Checked By: SS		Sheet 1 of 1		
W A T E R L E V E	S A M P L E S	DEPTH (m)	DESCRIPTION OF DRILLED PRODUCT (Soil type, colour, grain size, plasticity, minor components, observations)	S Y M B O L	CONSISTENCY (cohesive soils) or RELATIVE DENSITY (sands and gravels)	M O I S T U R E
			TOPSOIL: SILTY SAND: brown, fine to medium grained, trace of gravel	SM	-	D
	S2 @ 0.4 m	0.5	SILTY SAND: pale grey, fine to medium grained	SM	LOOSE	D
		1.0			MEDIUM DENSE	
		1.5	SILTY SAND: dark grey, fine to medium grained	SM	MEDIUM DENSE	M
		2.0	SILTY SAND: pale grey, fine to medium grained	SM	MEDIUM DENSE	M
		2.5				
			BOREHOLE DISCONTINUED AT 3.0 M			
D - disturbed sample U - undisturbed tube sample B - bulk sample WT - level of water table or free water N - Standard Penetration Test (SPT) S - jar sample				Contractor: STS Equipment: Edson RP70 Hole Diameter (mm): 100 Angle from Vertical (°): 0 Drill Bit: Spiral		
NOTES: See explanation sheets for meaning of all descriptive terms and symbols						

Form: I1-2

Client: NSW Land & Housing Corporation		Project / STS No. 31204/5140D-R		BOREHOLE NO.: BH 4		
Project: 2-4 Hamel Road & 15-17 Combles Parade, Matraville		Date: May 31, 2021				
Location: Refer to Drawing No. 21/1721		Logged: TS Checked By: SS		Sheet 1 of 1		
W A T E R L E V E	S A M P L E S	DEPTH (m)	DESCRIPTION OF DRILLED PRODUCT (Soil type, colour, grain size, plasticity, minor components, observations)	S Y M B O L	CONSISTENCY (cohesive soils) or RELATIVE DENSITY (sands and gravels)	M O I S T U R E
	S3 @ 0.4 m		TOPSOIL: SILTY SAND: brown, fine to medium grained, trace of gravel	SM	-	D-M
		0.5	SILTY SAND: pale grey, fine to medium grained	SM	LOOSE	D-M
					MEDIUM DENSE	
		1.0				
			SILTY SAND: brown, fine to medium grained, trace of gravel	SM	MEDIUM DENSE	D
		1.5	SILTY SAND: dark grey, fine to medium grained	SM	MEDIUM DENSE	D
		2.0				
			SILTY SAND: light grey, fine to medium grained	SM	MEDIUM DENSE	D
		2.5				
			BOREHOLE DISCONTINUED AT 3.0 M			
D - disturbed sample U - undisturbed tube sample B - bulk sample WT - level of water table or free water N - Standard Penetration Test (SPT) S - jar sample				Contractor: STS Equipment: Edson RP70 Hole Diameter (mm): 100 Angle from Vertical (°): 0 Drill Bit: Spiral		
NOTES: See explanation sheets for meaning of all descriptive terms and symbols						

Form: I1-2

Client: NSW Land & Housing Corporation			Project / STS No. 31204/5140D-R		BOREHOLE NO.: BH 6	
Project: 2-4 Hamel Road & 15-17 Combles Parade, Matraville			Date: May 31, 2021			
Location: Refer to Drawing No. 21/1721			Logged: TS Checked By: SS		Sheet 1 of 1	
W A T T A B E R L E	S A M P L E S	DEPTH (m)	DESCRIPTION OF DRILLED PRODUCT (Soil type, colour, grain size, plasticity, minor components, observations)	S Y M B O L	CONSISTENCY (cohesive soils) or RELATIVE DENSITY (sands and gravels)	M O I S T U R E
	S4 @ 0.4 m		TOPSOIL: SILTY SAND: brown, fine to medium grained, trace of gravel	SM	-	D-M
		0.5	SILTY SAND: pale grey, fine to medium grained	SM	LOOSE	D-M
		1.0				
			SILTY SAND: dark grey, fine to medium grained	SM	MEDIUM DENSE	M
		1.5				
		2.0				
			SILTY SAND: orange brown/yellow brown, fine to medium grained	SM	MEDIUM DENSE	M
		2.5				
			BOREHOLE DISCONTINUED AT 3.0 M			
D - disturbed sample WT - level of water table or free water S - jar sample			U - undisturbed tube sample B - bulk sample N - Standard Penetration Test (SPT)		Contractor: STS Equipment: Edson RP70 Hole Diameter (mm): 100	
NOTES:			See explanation sheets for meaning of all descriptive terms and symbols		Angle from Vertical (°): 0 Drill Bit: Spiral	

Perth Sand Penetrometer Test Report

Project: 2-4 HAMEL ROAD & 15-17 COMBLES PARADE, MATRAVILLE

Project No.: 31204/5140D-G

Client: NSW LAND & HOUSING CORPORATION

Report No.: 21/1721

Address: 31-39 Macquarie Street, Parramatta

Report Date: 1/06/2021

Test Method: AS 1289.6.3.3

Page: 1 of 1

Site No.	P1	P2	P3	P4	P5	P6
Location	Refer to Drawing No. 21/1721	Refer to Drawing No. 21/1721	Refer to Drawing No. 21/1721	Refer to Drawing No. 21/1721	Refer to Drawing No. 21/1721	Refer to Drawing No. 21/1721
Date Tested	31/5/2021	31/5/2021	31/5/2021	31/5/2021	31/5/2021	31/5/2021
Starting Level	Surface Level	Surface Level	Surface Level	Surface Level	Surface Level	Surface Level
Depth (m)	Penetration Resistance (blows / 150mm)					
0.00 - 0.15	4	3	5	4	4	3
0.15 - 0.30	3	4	3	2	2	2
0.30 - 0.45	2	4	3	2	1	2
0.45 - 0.60	2	3	2	1	1	1
0.60 - 0.75	2	2	2	4	3	3
0.75 - 0.90	3	2	3	3	3	3
0.90 - 1.05	4	3	4	3	4	3
1.05 - 1.20	3	4	3	3	3	3
1.20 - 1.35	5	5	5	4	5	3
1.35 - 1.50	4	4	4	5	6	5
1.50 - 1.65	6	8	6	7	7	8
1.65 - 1.80	6	4	7	6	5	6
1.80 - 1.95	7	8	7	6	7	8
1.95 - 2.10	8	7	5	7	6	8
2.10 - 2.25	7	7	6	8	6	7
2.25 - 2.40	7	5	8	7	8	8
2.40 - 2.55	9	10	7	8	9	9
2.55 - 2.70	10	8	7	7	8	10
2.70 - 2.85	9	8	9	7	8	9
2.85 - 3.00	11/D	9/D	10/D	9/D	8/D	9/D
3.00 - 3.15						
3.15 - 3.30						
3.30 - 3.45						
3.45 - 3.60						
3.60 - 3.75						

Remarks: * Pre drilled prior to testing



Approved Signatory.....

Technician: TS

Orlando Mendoza - Laboratory Manager

Tree Heights and Type

Project No. / STS No.: 31204/5140D-G

Technician: TS

[illegible]

E1. CLASSIFICATION OF SOILS

E1.1 Soil Classification and the Unified System

An assessment of the site conditions usually includes an appraisal of the data available by combining values of engineering properties obtained by the site investigation with descriptions, from visual observation of the materials present on site.

The system used by STS Geotechnics Pty Ltd (STS) in the identification of soil is the Unified Soil Classification system (USC) which was developed by the US Army Corps of Engineers during World War II and has since gained international acceptance and has been adopted in its metricated form by the Standards Association of Australia.

The Australian Site Investigation Code (AS1726-1981, Appendix D) recommends that the description of a soil includes the USC group symbols which are an integral component of the system.

The soil description should contain the following information in order:

Soil composition

- SOIL NAME and USC classification symbol (IN BLOCK LETTERS)
- plasticity or particle characteristics
- colour
- secondary and minor constituents (name estimated proportion, plasticity or particle characteristics, colour)

Soil condition

- moisture condition
- consistency or density index

Soil structure

- structure (zoning, defects, cementing)

Soil origin

interpretation based on observation eg FILL, TOPSOIL, RESIDUAL, ALLUVIUM.

E1.2 Soil Composition

- (a) Soil Name and Classification Symbol

The USC system is summarised in Figure E1.2.1. The primary division separates soil types on the basis of particle size into:

- Coarse grained soils - more than 50% of the material less than 60 mm is larger than 0.06 mm (60 µm).
- Fine grained soils - more than 50% of the material less than 60 mm is smaller than 0.06 mm (60 µm).

Initial classification is by particle size as shown in Table E1.2.1. Further classification of fine grained soils is based on plasticity.

TABLE E1.2.1 - CLASSIFICATION BY PARTICLE SIZE

NAME	SUB-DIVISION	SIZE
Clay (1)		< 2 µm
Silt (2)		2 µm to 60 µm
Sand	Fine Medium Coarse	60 µm to 200 µm 200 µm to 600 µm 600 µm to 2 mm
Gravel (3)	Fine Medium Coarse	2 mm to 6 mm 6 mm to 20 mm 20 mm to 60 mm
Cobbles (3)		60 mm to 200 mm
Boulders (3)		> 200 mm

Where a soil contains an appropriate amount of secondary material, the name includes each of the secondary components (greater than 12%) in increasing order of significance, eg sandy silty clay.

Minor components of a soil are included in the description by means of the terms "some" and "trace" as defined in Table E1.2.2.

TABLE E1.2.2 - MINOR SOIL COMPONENTS

TERM	DESCRIPTION	APPROXIMATE PROPORTION (%)
Trace	presence just detectable, little or no influence on soil properties	0-5
Some	presence easily detectable, little influence on soil properties	5-12

The USC group symbols should be included with each soil description as shown in Table E1.2.3

TABLE E1.2.3 - SOIL GROUP SYMBOLS

SOIL TYPE	PREFIX
Gravel	G
Sand	S
Silt	M
Clay	C
Organic	O
Peat	Pt

The group symbols are combined with qualifiers which indicate grading, plasticity or secondary components as shown on Table E1.2.4

TABLE E1.2.4 - SOIL GROUP QUALIFIERS

SUBGROUP	SUFFIX
Well graded	W
Poorly Graded	P
Silty	M
Clayey	C
Liquid Limit <50% - low to medium plasticity	L
Liquid Limit >50% - medium to high plasticity	H

(b) Grading

“Well graded”	Good representation of all particle sizes from the largest to the smallest.
“Poorly graded”	One or more intermediate sizes poorly represented
“Gap graded”	One or more intermediate sizes absent
“Uniformly graded”	Essentially single size material.

(c) Particle shape and texture

The shape and surface texture of the coarse grained particles should be described.

Angularity may be expressed as “rounded”, “sub-rounded”, “sub-angular” or “angular”.

Particle **form** can be “equidimensional”, “flat” or “elongate”.

Surface texture can be “glassy”, “smooth”, “rough”, “pitted” or “striated”.

(d) Colour

The colour of the soil should be described in the moist condition using simple terms such as:

Black	White	Grey	Red
Brown	Orange	Yellow	Green
Blue			

These may be modified as necessary by “light” or “dark”. Borderline colours may be described as a combination of two colours, eg red-brown.

For soils that contain more than one colour terms such as:

- Speckled Very small (<10 mm dia) patches
- Mottled Irregular
- Blotched Large irregular (>75 mm dia)
- Streaked Randomly oriented streaks

(e) Minor Components

Secondary and minor components should be individually described in a similar manner to the dominant component.

E1.3 Soil Condition

(a) Moisture

Soil moisture condition is described as “dry”, “moist” or “wet”.

The moisture categories are defined as:

Dry (D) - Little or no moisture evident. Soils are running. Moist (M) - Darkened in colour with cool feel. Granular soil particles tend to adhere. No free water evident upon remoulding of cohesive soils.

In addition the moisture content of cohesive soils can be estimated in relation to their liquid or plastic limit.

(b) Consistency

Estimates of the consistency of a clay or silt soil may be made from manual examination, hand penetrometer test, SPT results or from laboratory tests to determine undrained shear or unconfined compressive strengths. The classification of consistency is defined in Table E1.3.1.

TABLE E1.3.1 - CONSISTENCY OF FINE-GRAINED SOILS

TERM	UNCONFINED STRENGTH (kPa)	FIELD IDENTIFICATION
Very Soft	<25	Easily penetrated by fist. Sample exudes between fingers when squeezed in the fist.
Soft	25 - 50	Easily moulded in fingers. Easily penetrated 50 mm by thumb.
Firm	50 - 100	Can be moulded by strong pressure in the fingers. Penetrated only with great effort.
Stiff	100 - 200	Cannot be moulded in fingers. Indented by thumb but penetrated only with great effort.
Very Stiff	200 - 400	Very tough. Difficult to cut with knife. Readily indented with thumb nail.
Hard	>400	Brittle, can just be scratched with thumb nail. Tends to break into fragments.

Unconfined compressive strength as derived by a hand penetrometer can be taken as approximately double the undrained shear strength ($q_u = 2 c_u$).

(c) Density Index

The insitu density index of granular soils can be assessed from the results of SPT or cone penetrometer tests. Density index should not be estimated visually.

TABLE E1.3.2 - DENSITY OF GRANULAR SOILS

TERM	SPT N VALUE	STATIC CONE VALUE q_c (MPa)	DENSITY INDEX (%)
Very Loose	0 - 3	0 - 2	0 - 15
Loose	3 - 8	2 - 5	15 - 35
Medium Dense	8 - 25	5 - 15	35 - 65
Dense	25 - 42	15 - 20	65 - 85
Very Dense	>42	>20	>85

E1.4 Soil Structure

(a) Zoning

A sample may consist of several zones differing in colour, grain size or other properties. Terms to classify these zones are:

Layer - continuous across exposure or sample

Lens - discontinuous with lenticular shape

Pocket - irregular inclusion

Each zone should be described, their distinguishing features, and the nature of the interzone boundaries.

(b) Defects

Defects which are present in the sample can include:

- fissures
- roots (containing organic matter)
- tubes (hollow)
- casts (infilled)

Defects should be described giving details of dimensions and frequency. Fissure orientation, planarity, surface condition and infilling should be noted. If there is a tendency to break into blocks, block dimensions should be recorded

E1.5 Soil Origin

Information which may be interpretative but which may contribute to the usefulness of the material description should be included. The most common interpreted feature is the origin of the soil. The assessment of the probable origin is based on the soil material description, soil structure and its relationship to other soil and rock materials.

Common terms used are:

“Residual Soil” - Material which appears to have been derived by weathering from the underlying rock. There is no evidence of transport.

“Colluvium” - Material which appears to have been transported from its original location. The method of movement is usually the combination of gravity and erosion.

“Landslide Debris” - An extreme form of colluvium where the soil has been transported by mass movement. The material is obviously distributed and contains distinct defects related to the slope failure.

“Alluvium” - Material which has been transported essentially by water. usually associated with former stream activity.

“Fill” - Material which has been transported and placed by man. This can range from natural soils which have been

placed in a controlled manner in engineering construction to dumped waste material. A description of the constituents should include an assessment of the method of placement.

E1.6 Fine Grained Soils

The physical properties of fine grained soils are dominated by silts and clays.

The definition of clay and silt soils is governed by their Atterberg Limits. Clay soils are characterised by the properties of cohesion and plasticity with cohesion defines as the ability to deform without rupture. Silts exhibit cohesion but have low plasticity or are non-plastic.

The field characteristics of clay soils include:

- dry lumps have appreciable dry strength and cannot be powdered
- volume changes occur with moisture content variation
- feels smooth when moist with a greasy appearance when cut.

The field characteristics of silt soils include:

- dry lumps have negligible dry strength and can be powdered easily
- dilatancy - an increase in volume due to shearing - is indicated by the presence of a shiny film of water after a hand sample is shaken. The water disappears upon remoulding. Very fine grained sands may also exhibit dilatancy.
- low plasticity index
- feels gritty to the teeth

E1.7 Organic Soils

Organic soils are distinguished from other soils by their appreciable content of vegetable matter, usually derived from plant remains.

The soil usually has a distinctive smell and low bulk density.

The USC system uses the symbol Pt for partly decomposed organic material. The O symbol is combined with suffixes “O” or “H” depending on plasticity.

Where roots or root fibres are present their frequency and the depth to which they are encountered should be recorded. The presence of roots or root fibres does not necessarily mean the material is an “organic material” by classification.

Coal and lignite should be described as such and not simply as organic matter.

APPENDIX B – LABORATORY TEST RESULTS

CERTIFICATE OF ANALYSIS

Work Order : **ES2120452**
Client : **STS Geotechnics**
Contact : **ENQUIRES STS**
Address : **Unit 14/1 Cowpasture Place**
Wetherill Park 2164
Telephone : **----**
Project : **30055/31204/31222/31230**
Order number : **E-2021-0191**
C-O-C number : **----**
Sampler : **----**
Site : **----**
Quote number : **EN/222**
No. of samples received : **12**
No. of samples analysed : **12**

Page : 1 of 5
Laboratory : Environmental Division Sydney
Contact : Customer Services ES
Address : 277-289 Woodpark Road Smithfield NSW Australia 2164
Telephone : +61-2-8784 8555
Date Samples Received : 01-Jun-2021 11:30
Date Analysis Commenced : 03-Jun-2021
Issue Date : 04-Jun-2021 17:08



Accreditation No. 825
 Accredited for compliance with
 ISO/IEC 17025 - Testing

This report supersedes any previous report(s) with this reference. Results apply to the sample(s) as submitted, unless the sampling was conducted by ALS. This document shall not be reproduced, except in full.

This Certificate of Analysis contains the following information:

- General Comments
- Analytical Results

Additional information pertinent to this report will be found in the following separate attachments: Quality Control Report, QA/QC Compliance Assessment to assist with Quality Review and Sample Receipt Notification.

Signatories

This document has been electronically signed by the authorized signatories below. Electronic signing is carried out in compliance with procedures specified in 21 CFR Part 11.

Signatories	Position	Accreditation Category
Ankit Joshi	Inorganic Chemist	Sydney Inorganics, Smithfield, NSW
Ivan Taylor	Analyst	Sydney Inorganics, Smithfield, NSW



General Comments

The analytical procedures used by ALS have been developed from established internationally recognised procedures such as those published by the USEPA, APHA, AS and NEPM. In house developed procedures are fully validated and are often at the client request.

Where moisture determination has been performed, results are reported on a dry weight basis.

Where a reported less than (<) result is higher than the LOR, this may be due to primary sample extract/digestate dilution and/or insufficient sample for analysis.

Where the LOR of a reported result differs from standard LOR, this may be due to high moisture content, insufficient sample (reduced weight employed) or matrix interference.

When sampling time information is not provided by the client, sampling dates are shown without a time component. In these instances, the time component has been assumed by the laboratory for processing purposes.

Where a result is required to meet compliance limits the associated uncertainty must be considered. Refer to the ALS Contact for details.

Key : CAS Number = CAS registry number from database maintained by Chemical Abstracts Services. The Chemical Abstracts Service is a division of the American Chemical Society.
LOR = Limit of reporting
^ = This result is computed from individual analyte detections at or above the level of reporting
ø = ALS is not NATA accredited for these tests.
~ = Indicates an estimated value.



Analytical Results

Sub-Matrix: SOIL (Matrix: SOIL)				Sample ID	30055/7623	30055/7624	30055/7633	30055/7634	30055/7635
Sampling date / time					31-May-2021 00:00	31-May-2021 00:00	31-May-2021 00:00	31-May-2021 00:00	31-May-2021 00:00
Compound	CAS Number	LOR	Unit		ES2120452-001	ES2120452-002	ES2120452-003	ES2120452-004	ES2120452-005
				Result	Result	Result	Result	Result	Result
EA002: pH 1:5 (Soils)									
pH Value	----	0.1	pH Unit		7.9	8.2	6.4	6.0	5.4
EA010: Conductivity (1:5)									
Electrical Conductivity @ 25°C	----	1	µS/cm		111	77	35	32	60
EA055: Moisture Content (Dried @ 105-110°C)									
Moisture Content	----	0.1	%		15.1	5.8	13.0	22.7	25.1
ED040S : Soluble Sulfate by ICPAES									
Sulfate as SO4 2-	14808-79-8	10	mg/kg		<10	90	20	40	30



Analytical Results

Sub-Matrix: SOIL (Matrix: SOIL)				Sample ID	30055/7636	31204/S1	31204/S2	31204/S3	31204/S4
Sampling date / time					31-May-2021 00:00	31-May-2021 00:00	31-May-2021 00:00	31-May-2021 00:00	31-May-2021 00:00
Compound	CAS Number	LOR	Unit		ES2120452-006	ES2120452-007	ES2120452-008	ES2120452-009	ES2120452-010
Result					Result	Result	Result	Result	Result
EA002: pH 1:5 (Soils)									
pH Value	----	0.1	pH Unit		6.6	6.0	6.1	6.2	6.3
EA010: Conductivity (1:5)									
Electrical Conductivity @ 25°C	----	1	µS/cm		39	13	16	18	7
EA055: Moisture Content (Dried @ 105-110°C)									
Moisture Content	----	0.1	%		27.4	2.5	3.3	4.7	3.5
ED040S : Soluble Sulfate by ICPAES									
Sulfate as SO4 2-	14808-79-8	10	mg/kg		80	20	20	20	<10
ED045G: Chloride by Discrete Analyser									
Chloride	16887-00-6	10	mg/kg		----	<10	<10	<10	<10



Analytical Results

Sub-Matrix: SOIL (Matrix: SOIL)				Sample ID	31222/S1	31230/S1	----	----	----
Sampling date / time					31-May-2021 00:00	31-May-2021 00:00	----	----	----
Compound	CAS Number	LOR	Unit		ES2120452-011	ES2120452-012	-----	-----	-----
Result					Result	Result	----	----	----
EA002: pH 1:5 (Soils)									
pH Value	----	0.1	pH Unit		6.3	5.3	----	----	----
EA010: Conductivity (1:5)									
Electrical Conductivity @ 25°C	----	1	µS/cm		34	40	----	----	----
EA055: Moisture Content (Dried @ 105-110°C)									
Moisture Content	----	0.1	%		16.4	14.4	----	----	----
ED040S : Soluble Sulfate by ICPAES									
Sulfate as SO4 2-	14808-79-8	10	mg/kg		30	40	----	----	----
ED045G: Chloride by Discrete Analyser									
Chloride	16887-00-6	10	mg/kg		10	<10	----	----	----